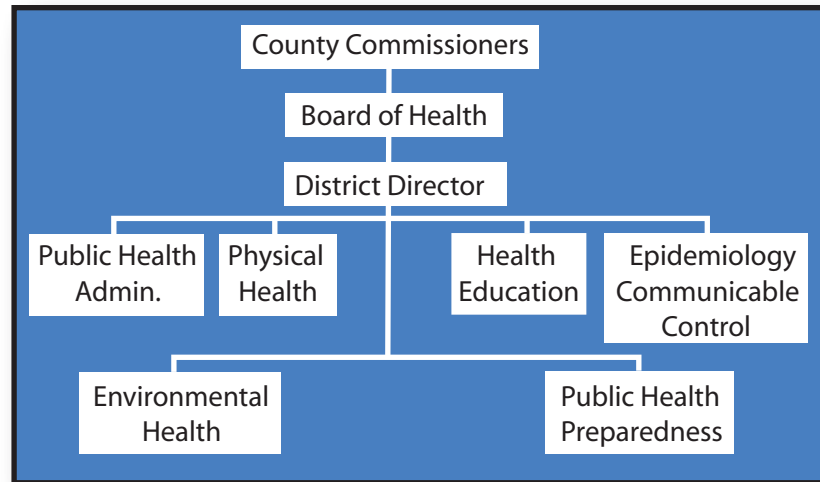
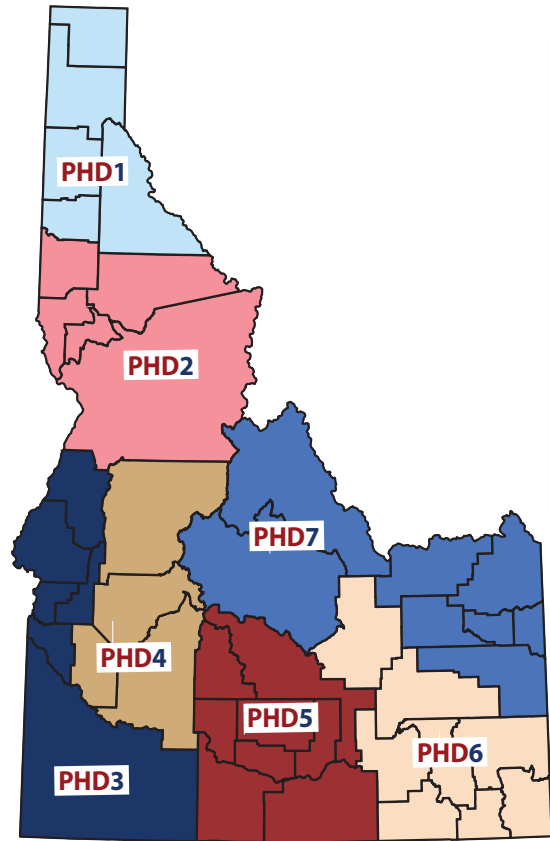


# History, Unique System, General Services

Idaho's seven Public Health Districts were established in 1970 under Chapter 4, Title 39, in Idaho Code to ensure that preventive public health services are accessible by all citizens in Idaho's 44 counties. In creating this unique

system, the Legislature wanted local control and governance of public health services. Health districts are not state agencies or departments but single-purpose districts, designed like school and highway districts.



## How Public Health Works

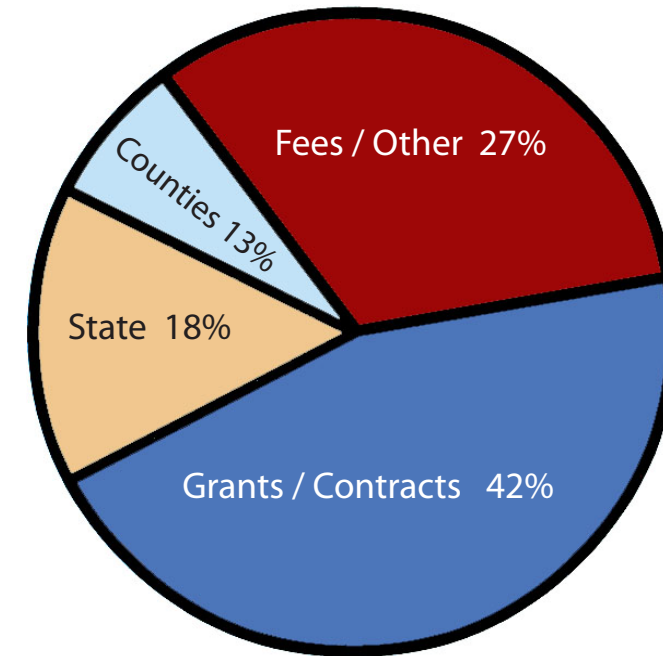
County Commissioners in each health district appoint a Board of Health that governs the district's policies and defines the public health services based on the unique needs of the local citizens. Each health board is composed of seven to nine members serving staggered five-year terms. This Board appoints a Director to administer and manage the day-to-day activities of the district. Each health district is accountable to its local Board of Health for timely consideration of local health issues and coordinated delivery of services.

Idaho Code outlines basic services the health districts are expected to provide, however it does not restrict the districts solely to these categories. Services vary by district according to local needs but, in general, fall into six broad areas:

- Epidemiology/Communicable Disease Control
- Health Education
- Physical Health
- Environmental Health
- Public Health Preparedness
- Public Health Administration

# Funding for Public Health in Idaho

( Funding Sources, Funding Formulas )



Basic funding for the Public Health Districts is a partnership between the state and the counties. Additional funds come from fees for services plus grants and contracts with federal and state agencies. The Legislature approves only the state's portion, approximately 18% of the total funding formula. The counties within each health district are responsible for setting and approving their district's overall budget.

The State General Fund distribution is calculated by a formula which is approved by the Idaho Association of District Boards of Health from authority in Idaho Code 39-411. This formula is based on 20% of the population; 60% of the county contribution; 10% of the district's poverty rate; and 10% of the Public Assistance rate.

Each county within a health district makes a contribution, calculated by a formula set in Idaho Code 39-424. This contribution is based on 70% of the county's population and 30% of the total taxable market value.

The roles of the Public Health Districts and the Idaho Department of Health and Welfare are often confused. Though they work together, they are separate agencies. The Department of Health and Welfare (H&W) is the health agency authorized by the Governor to receive federal grants and contracts. These services are delivered more effectively at the local level so H & W contracts with the health districts. Contracted programs include Public Health Preparedness, Immunizations, Reproductive Health, Communicable Disease Investigation, the Women, Infants and Children (WIC) Program, Tobacco Prevention, and others.